

# Ravenswood City School District

## 2005-06 ACADEMIC OUTCOMES SUMMARY GRAPHS

### Experimental Group Students (*ETC Online Users*) - CST Performance Level

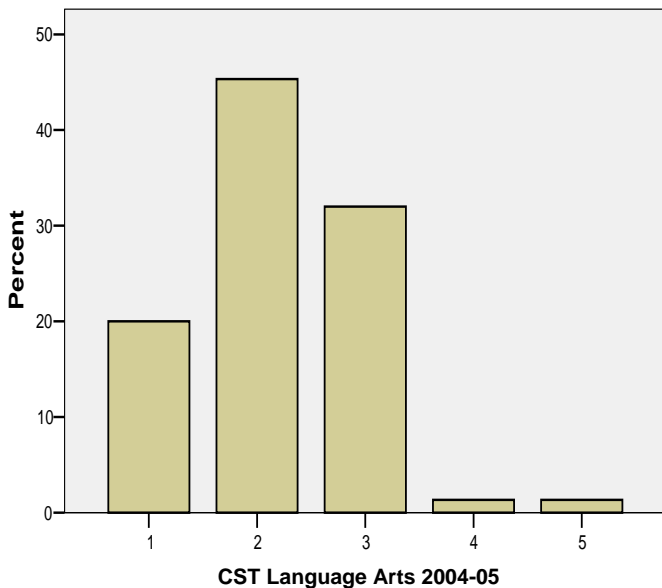
***ETC Online Users* CST  
Language Arts Performance Level  
2004-05 Frequency Table**

	Percent
Far Below Basic	20.0%
Below Basic	45.3%
Basic	32.0%
Proficient	1.3%
Advanced	1.3%

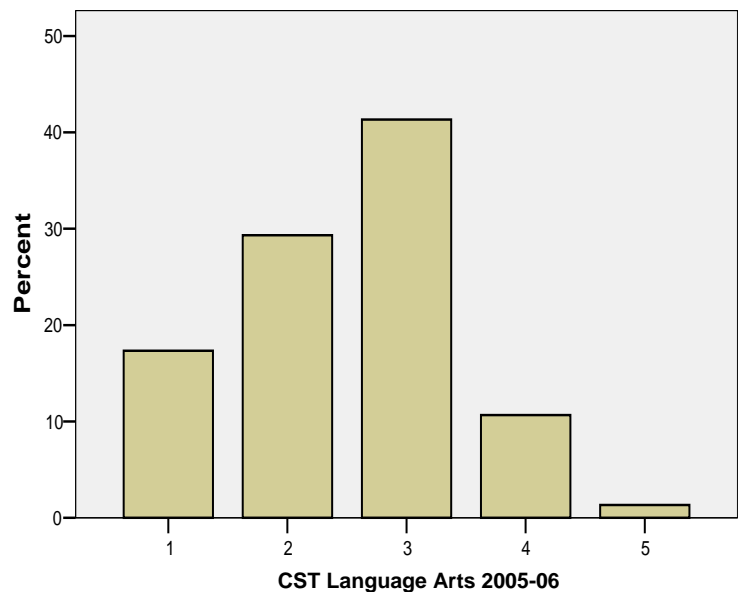
***ETC Online Users* CST  
Language Arts Performance Level  
2005-06 Frequency Table**

	Percent
Far Below Basic	17.3%
Below Basic	29.3%
Basic	41.3%
Proficient	10.7%
Advanced	1.3%

***ETC Online Users* CST Language Arts  
Performance Level 2004-05 Frequency Bar Graph**



***ETC Online Users* CST Language Arts Performance  
Level 2005-06 Frequency Bar Graph**



**CST Language Arts Performance Level 2005-06  
Expected Frequencies**

	Observed N	Expected N	Residual
1	13	15.0	-2.0
2	22	34.0	-12.0
3	31	24.0	7.0
4	8	1.0	7.0
5	1	1.0	.0
Total	75		

**Chi-Square Test Statistics**

	CST Language Arts Performance Level 2005-06
Chi-square(a)	55.544
df	4
Asymp. Sig.	.000

a 2 cells (40.0%) have expected frequencies less than 5. The minimum expected cell frequency is 1.0.

# Ravenswood City School District

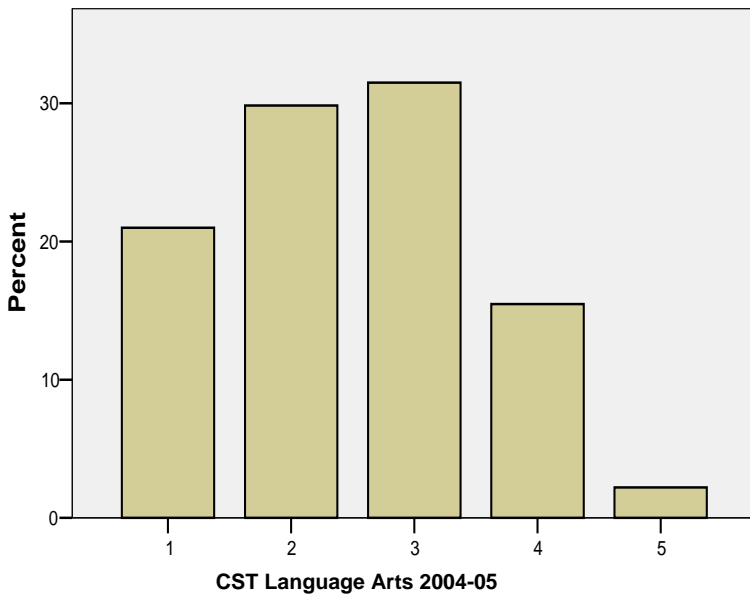
## 2005-06 ACADEMIC OUTCOMES SUMMARY GRAPHS

### Control Group Students (Non-ETC Online Users) - CST Performance Level

**Non-ETC Online Users  
CST Language Arts Performance  
Level 2004-05 Frequency Table**

	Percent
Far Below Basic	21.0%
Below Basic	29.8%
Basic	31.5%
Proficient	15.5%
Advanced	2.2%

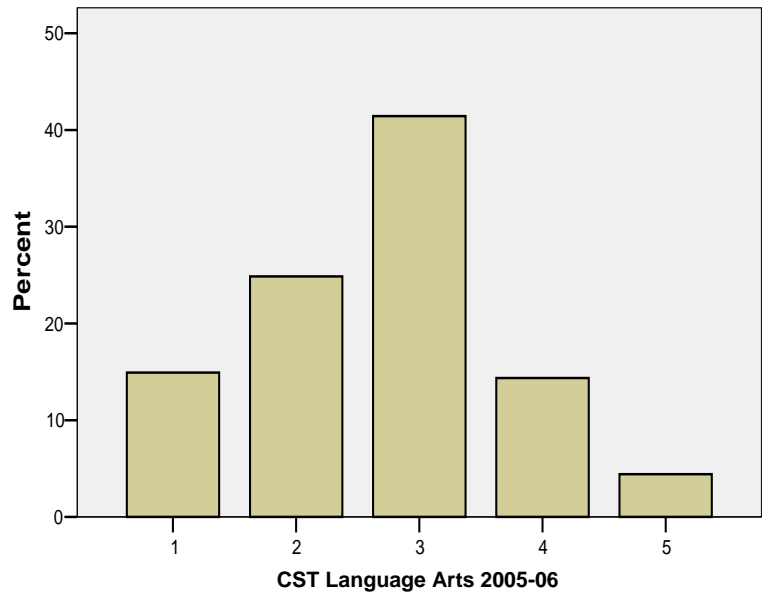
**Non-ETC Online Users Students CST Language  
Arts Performance Level 2004-05 Frequency Bar  
Graph**



**Non-ETC Online Users  
CST Language Arts Performance Level  
2005-06 Frequency Table**

	Percent
Far Below Basic	14.9%
Below Basic	24.9%
Basic	41.4%
Proficient	14.4%
Advanced	4.4%

**Non-ETC Online Users Students CST Language Arts  
Performance Level 2005-06 Frequency Bar  
Graph**



**CST Language Arts Performance Level 2005-06  
Expected Frequencies**

	Observed N	Expected N	Residual
1	27	38.0	-11.0
2	45	54.0	-9.0
3	75	57.0	18.0
4	26	28.0	-2.0
5	8	4.0	4.0
Total	181		

**Chi-Square Test Statistics**

	CST Language Arts Performance Level 2005-06
Chi-square(a)	14.511
df	4
Asymp. Sig.	.006

a 1 cells (20.0%) have expected frequencies less than 5. The minimum expected cell frequency is 4.0.